

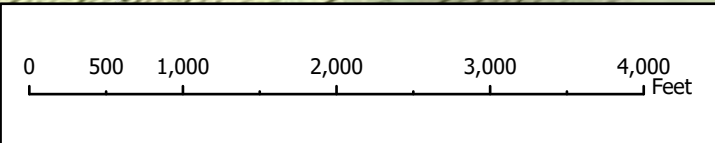
**Block 1 - 56 acres**  
**Block 2 - 7 acres**  
**Block 3 - 4 acres**  
**Block 4 - 17 acres**  
**Block 5 - 13 acres**  
**Total - 97 acres**



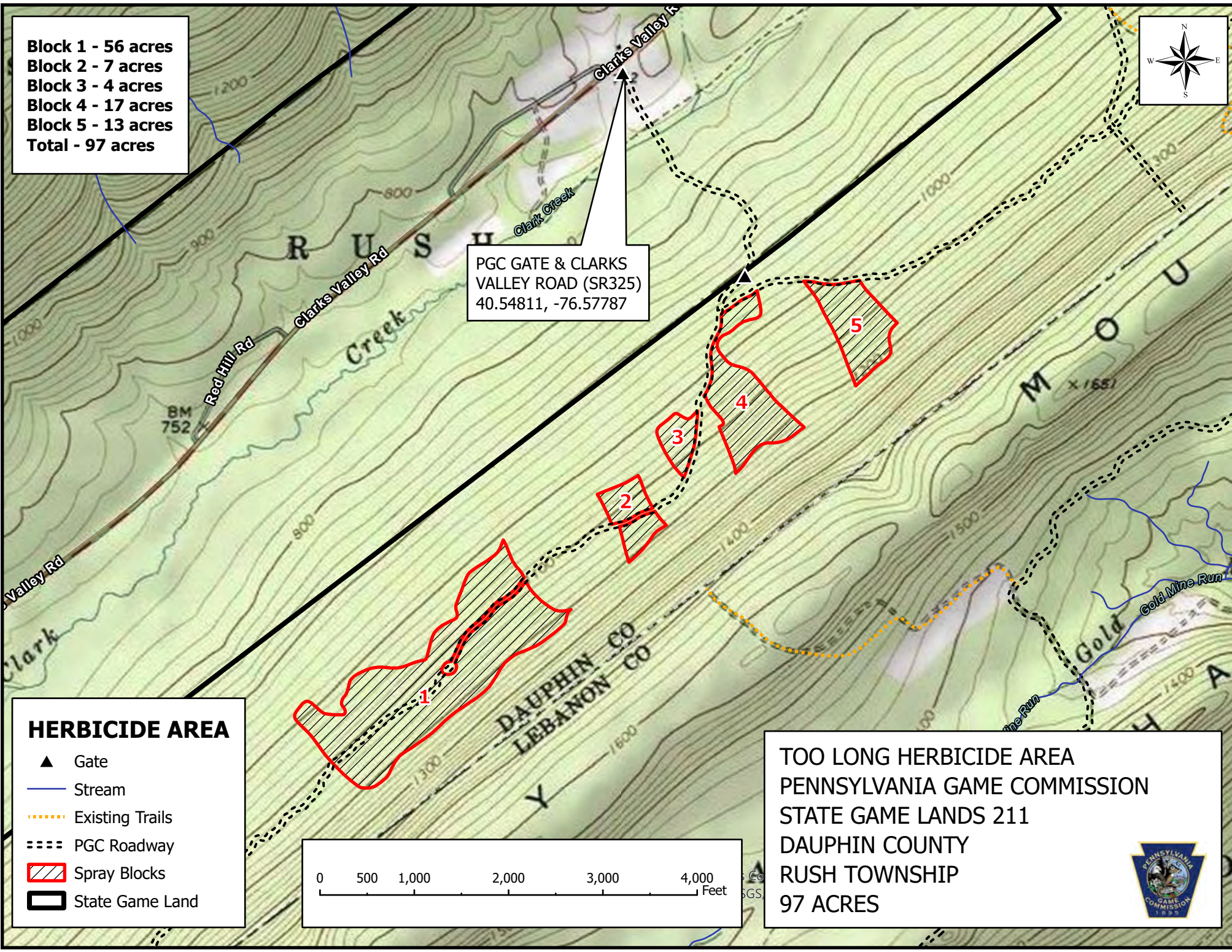
PGC GATE & CLARKS  
 VALLEY ROAD (SR325)  
 40.54811, -76.57787

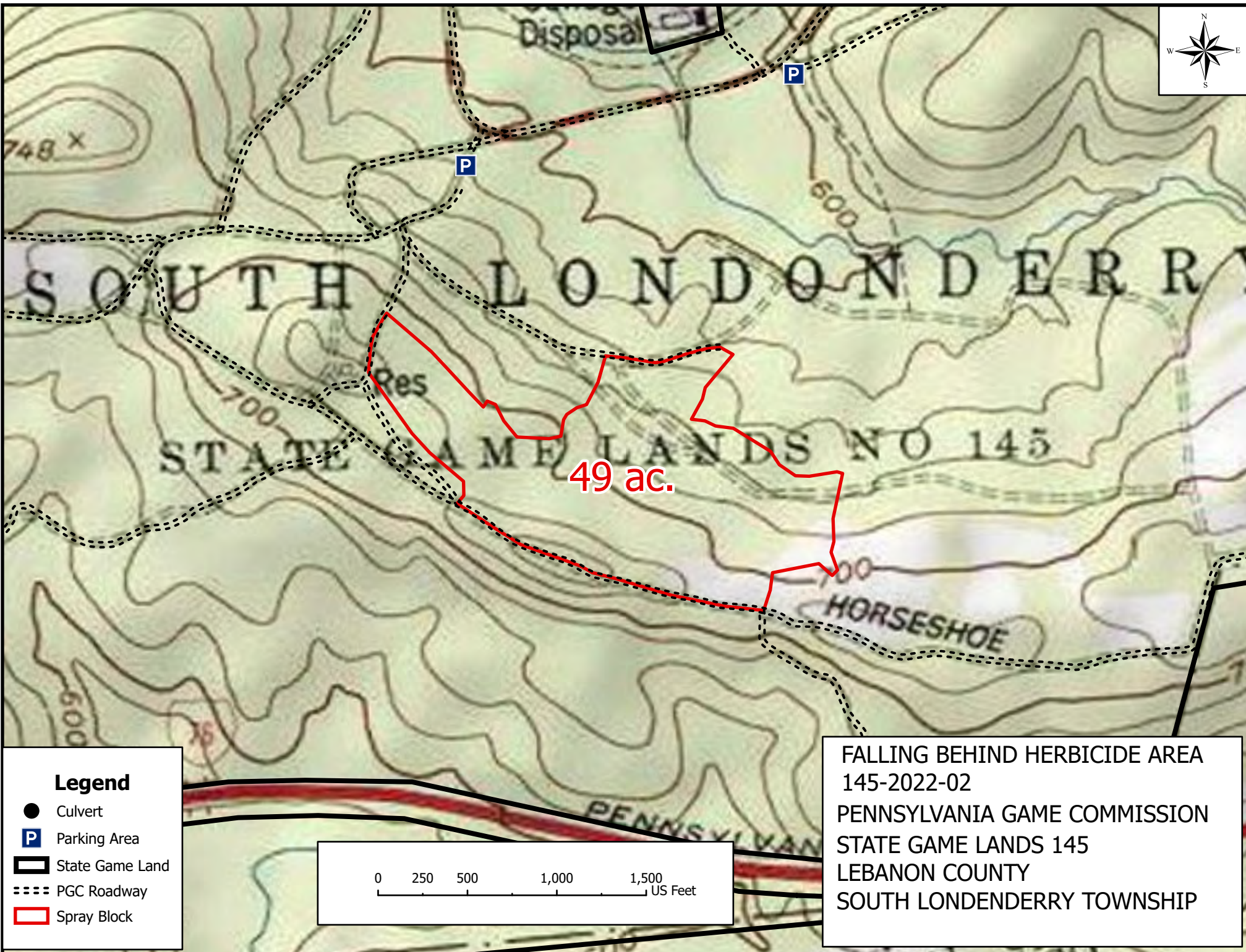
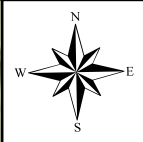
**HERBICIDE AREA**

- ▲ Gate
- Stream
- ⋯ Existing Trails
- ⋮ PGC Roadway
- ▨ Spray Blocks
- ▭ State Game Land



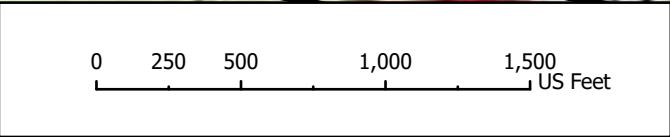
**TOO LONG HERBICIDE AREA**  
 PENNSYLVANIA GAME COMMISSION  
 STATE GAME LANDS 211  
 DAUPHIN COUNTY  
 RUSH TOWNSHIP  
 97 ACRES



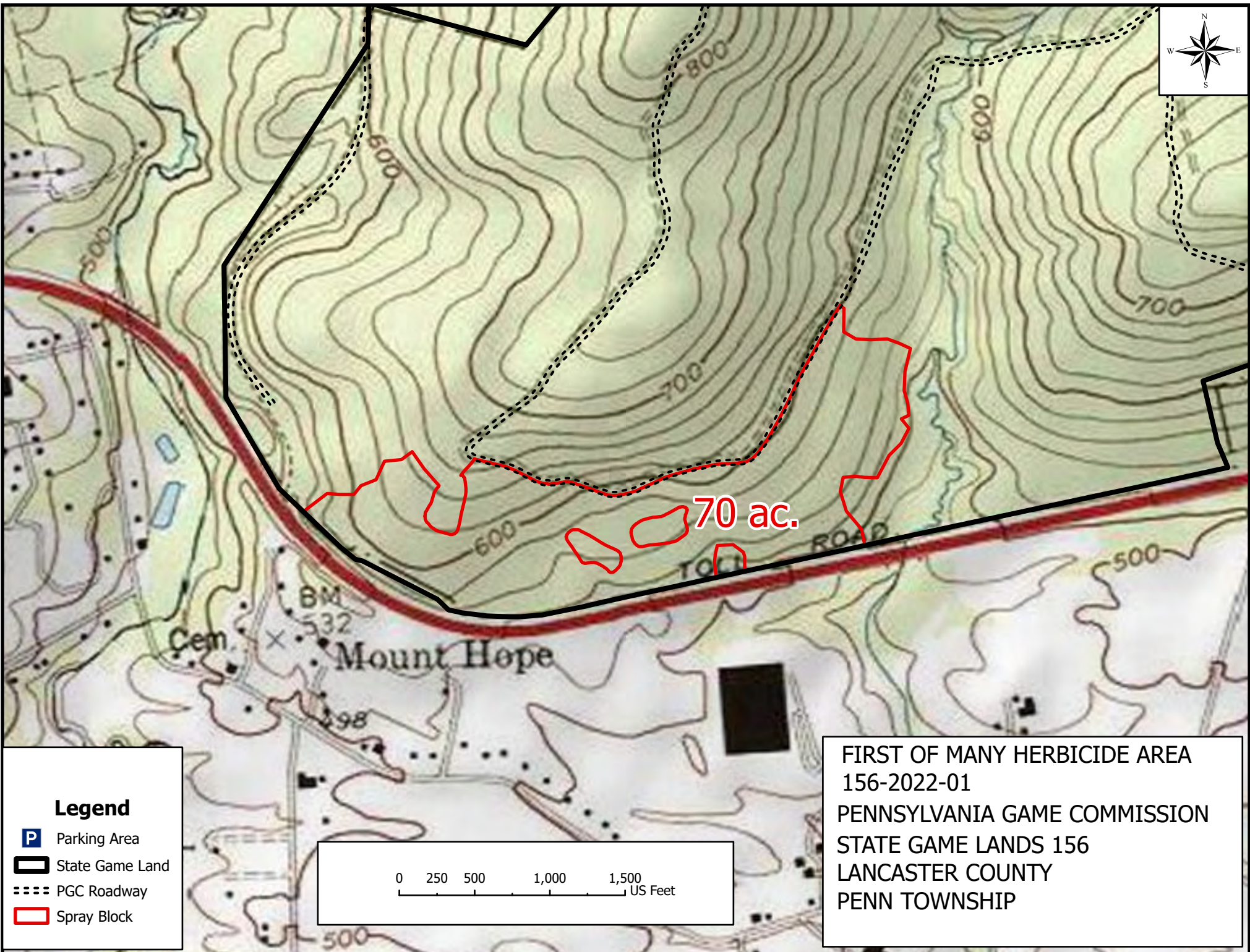


**Legend**

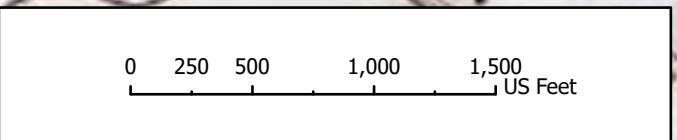
- Culvert
- P Parking Area
- ▭ State Game Land
- ⋯ PGC Roadway
- ▭ Spray Block



FALLING BEHIND HERBICIDE AREA  
 145-2022-02  
 PENNSYLVANIA GAME COMMISSION  
 STATE GAME LANDS 145  
 LEBANON COUNTY  
 SOUTH LONDENDERRY TOWNSHIP



70 ac.



**Legend**

- Parking Area
- State Game Land
- PGC Roadway
- Spray Block

FIRST OF MANY HERBICIDE AREA  
156-2022-01  
PENNSYLVANIA GAME COMMISSION  
STATE GAME LANDS 156  
LANCASTER COUNTY  
PENN TOWNSHIP